

Maramec Spring Park

OPENING DAY 2021!

Information To Know Before You Go



OPENING DAY 1959

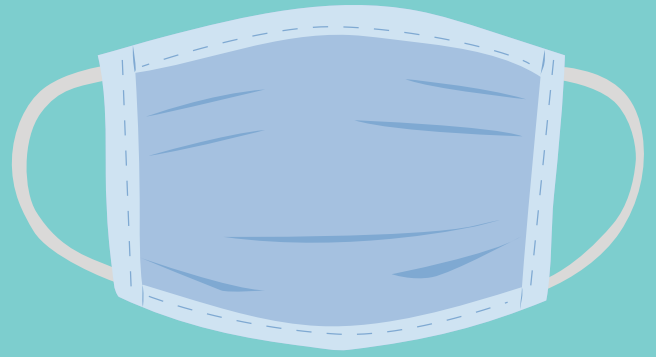


4,000

Projected number of trout being stocked by the Missouri Department of Conservation for March 1, 2021!

Social Distancing & Masks

To ensure we have a safe and healthy start to our season we will continue our social distancing and mask **requirements** in all buildings.



Pick & Shovel Cafe Open

The café will be open 7:00 am to 2:00 pm. Limited seating is available in accordance with social distancing measures. A limited menu will be available to ensure patrons are served in a timely manner.

Avoid the Lines...Buy Early!

Avoid a LONG wait by purchasing your annual fishing license before arriving at the park. Daily trout tags for March 1, 2021 are also for sale now at the reception building. In a hope to ease congestion in the building an "express tent" will be set up outside for purchase of daily tags only.



OPENING DAY 1959

What Does it Cost?

Daily Trout Tag:

\$5 per adult

\$3 per child

Park Entrance Fee:

\$5 per car

\$40 per season pass



We can't wait to see you back
at the park!

Questions? Call (573) 265-7387

